

FIBERFLO™ “PM” PLEATED CARTRIDGE FILTERS

POLYPROPYLENE

FiberFlo “PM” polypropylene cartridges are absolutely rated cartridge filters. Made of polypropylene membrane, the filters have an increased surface area with excellent flow rates per 10 inch lengths.

Their compatibility with a broad range of chemicals makes them suitable for the filtration of acids, bases, water and solvents. The hydrophobic nature of the membrane makes “PM” filters an economical alternative to PTFE membrane filters in air, process gas and vent filter applications.

Dependable Performance

FiberFlo “PM” cartridges consist of a polypropylene membrane with thermally bonded polypropylene components to provide a very durable filter with a single material of construction.

The unique hydrophobic polypropylene membrane contains no surfactants or surface wetting agents. Manufactured under QSR, samples from each manufacturing lot are tested by water intrusion to ensure consistent and reliable performance, and rinsed with 17+ megohm cm water to remove any manufacturing debris.

All FiberFlo “PM” cartridges pass USP XXI class VI plastic tests as well as tests for cytotoxicity, hemolysis and pyrogenicity.

Applications

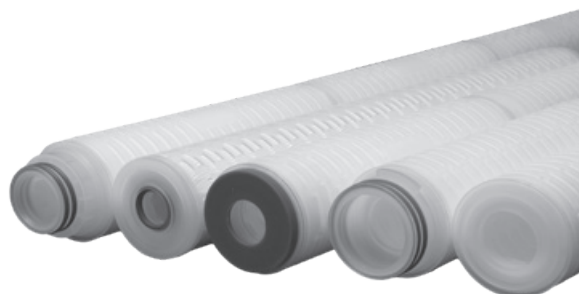
- Final filtration for high purity process chemicals
- Economical air or process gas filtration
- Tank vent filtration

Standard Features

- Hydrophobic membrane
- Absolute rated
- Homogenous high purity media
- Rigorous quality standards
- Economical filtration
- Long service life

End-Fitting Options

End Fitting Options:	
Description	Code
SOE-222 O-Ring/Flat Bottom	A
SOE-222 O-Ring/Fin	B
SOE-226 O-Ring/Fin	C
DOE-Flat Gasket/Flat Gasket	D
SOE-213 O-Ring Internal / Flat End	E



Specifications

Filter Media: Pleated Polypropylene Membrane
 Membrane Support, Core Tube, Sleeve, End Caps: Polypropylene

Sealing Technology: Thermal Bonding

Endotoxins: Less than 0.5 EU/ml

Biosafety: All components meet or exceed USP Class VI-121° plastic tests

Oxidizable Substances: Filtrate meets or exceeds USP XXI requirements for purified water after 1 liter flush

O-Ring: Silicone

O-Ring Color: Red

Cartridge Dimensions

Nominal Length*	Filtration Area
10 inch	7 ft ² / 0.65 m ²
20 inch	14.0 ft ² / 1.30 m ²
30 inch	21 ft ² / 1.95 m ²
40 inch	28.0 ft ² / 2.60 m ²

Outside Diameter

2.77 in / 7 cm

**Actual overall length of cartridge will vary depending on configuration. Cartridge performance is as specified regardless of configuration.*

Max. Differential Pressure:

Forward: 50 psi (3.4 bar) at 68°F (20°C)

Reverse: 40 psi (2.7 bar) at 68°F (20°C)

Pore sizes

0.1 and 0.2 microns