

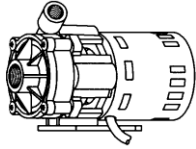
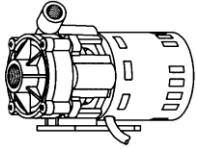


# MARCH PUMPS

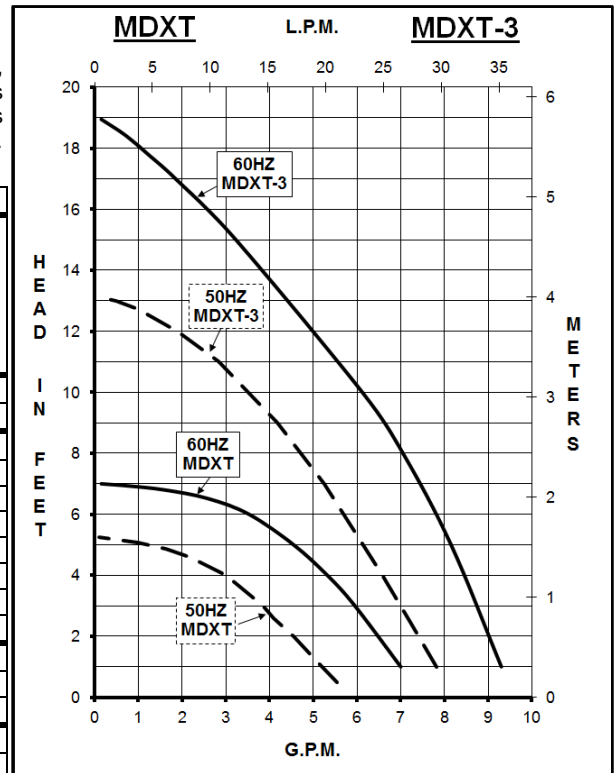
1819 PICKWICK AVE., GLENVIEW, IL 60026-1306, U.S.A  
 PHONE: (847) 729-5300 - FAX: (847) 729-7062  
 WWW.MARCHPUMP.COM

## MDXT, MDXT-3

**DESCRIPTION & OPERATION:** Series MDXT are centrifugal magnetic drive pumps, eliminating the need for a shaft seal. Pumps can be serviced with a screwdriver. Pumps are not self-priming, lack a suction lift, and thus require a **flooded suction**. Pumps **cannot be run dry** because the impeller requires the liquid being pumped for lubrication. For application assistance, contact March Pump.

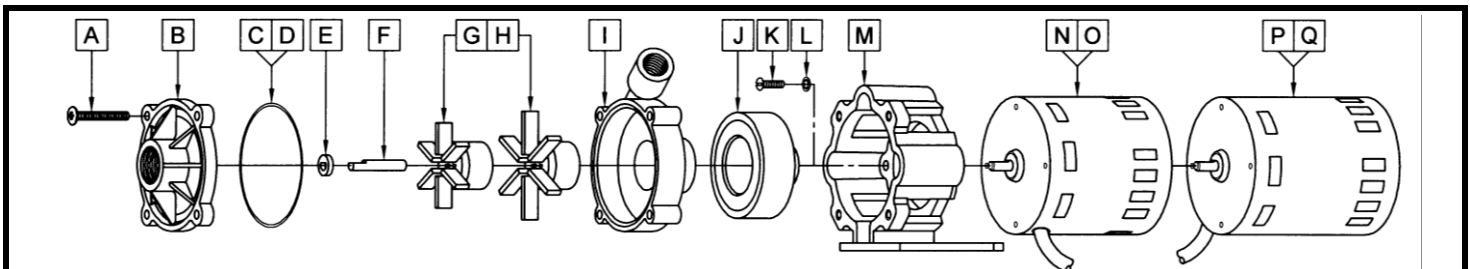
MODELS	MDXT				MDXT-3			
								
Product #	115 V	0135-0174-0100			0135-0174-0300			
	230 V	0135-0174-0200			0135-0174-0400			
<b>UNITS</b>	<b>60 Hz</b>	<b>50 Hz</b>			<b>60 Hz</b>	<b>50 Hz</b>		
Max Flow	7 gpm	22 lpm			8.5 gpm	30 lpm		
Max Head	7 ft / 3.0 psi	1.6 m			19 ft / 8.2 psi	4 m		
Inlet - Outlet	1/2" FPT - 3/8" FPT				1/2" FPT - 3/8" FPT			
Max Internal Pressure	50 psi / 344 kPa				50 psi / 344 kPa			
Max Liquid Temperature	190 °F / 87 °C				190 °F / 87 °C			
Packed Weight	115 V	4.60 lbs / 2.08 kg			5.25 lbs / 2.38 kg			
	230 V	5.20 lbs / 2.35 kg			5.25 lbs / 2.38 kg			
<b>ELECTRICAL 60 Hz</b>	<b>W</b>	<b>A</b>	<b>Hp</b>	<b>Rpm</b>	<b>W</b>	<b>A</b>	<b>Hp</b>	<b>Rpm</b>
115 V	59	0.94	1/55	1750	115	1.55	1/25	3450
230 V	59	0.45	1/40	1750	114	0.7	1/25	3450
<b>ELECTRICAL 50 Hz</b>	<b>W</b>	<b>A</b>	<b>kW</b>	<b>Rpm</b>	<b>W</b>	<b>A</b>	<b>kW</b>	<b>Rpm</b>
115 V					118	1.55	0.029	2850
230 V	64	0.5	0.018	1300	120	0.7	0.029	2850
<b>OVERALL SIZE</b>	<b>Height</b>	<b>Width</b>	<b>Length</b>	<b>Height</b>	<b>Width</b>	<b>Length</b>		
115 V	4.86"	3.88"	7.14"	4.86"	3.88"	7.75"		
	12.3 cm	9.8 cm	18.1 cm	12.3 cm	9.8 cm	19.6 cm		
230 V	4.86"	3.88"	7.39"	4.86"	3.88"	8.17"		
	12.3 cm	9.8 cm	18.7 cm	12.3 cm	9.8 cm	20.7 cm		
<b>Materials in Contact with Solution:</b>	Polypropylene, Ceramic Magnet, Buna N, Ceramic				Polypropylene, Ceramic Magnet, Buna N, Ceramic			

All specifications/values are based on pumping water and are intended as a guideline only. Values may vary with different motors.



**ELECTRICAL:** All models have air cooled motors that are U.L. listed and are rated for continuous duty. Motors have a 3 foot (0.9 m) cord. Air cooled motors are separate voltage 115 Volt 60 Hz, 115 Volt 50/60 Hz, or 230 Volt 50/60 Hz. Motors are not dual voltage.

**LIMITED WARRANTY:** March pumps are guaranteed only against defects in workmanship or materials for a period of one year from date of manufacture pumping water. For the complete warranty and to register online go to [www.marchpump.com/warranty-registration](http://www.marchpump.com/warranty-registration)



**NOTE:** When attaching the Drive Magnet to the motor shaft, position the face of the Drive Magnet 1/16 inch below the face of the Motor Bracket.

#	DESCRIPTION	MATERIAL	MDXT	MDXT-3	QTY.	MDXT	MDXT-3
A	Screw	Stainless Steel	#10-32 x 1-1/2 Lg.		4	0823-0008-1000	
B	Cover	Polypropylene	1/2 FPT Inlet		1	0135-0172-1000	
C	"O" Ring	Buna N	1/16 CS x 2-7/8 OD		1	0135-0039-1000	
D	"O" Ring (Option)	Viton	1/16 CS x 2-7/8 OD		1	0135-0046-1000	
E	Thrust Washer	Ceramic			1	0130-0028-1000	
F	Shaft	Ceramic			1	0809-0160-1000	
G	Impeller	Polypropylene/Ceramic Magnet	2.625 Dia.	2.062 Dia.	1	0135-0026-0100	0135-0043-0100
H	Impeller Encapsulated (Option)	Polypropylene	2.625 Dia.	2.062 Dia.	1	0135-0133-0200	0135-0130-0200
I	Rear Housing	Polypropylene	3/8 FPT Outlet		1	0135-0171-1000	
J	Drive Magnet				1	0135-0126-0100	
K	Screw	Stainless Steel	#8-32 x 5/8 Lg.		4	0618-0027-1000	
L	Lock Washer	Stainless Steel	#8		4	0620-0010-1000	
M	Motor Bracket	Plastic			1	0135-0168-0100	
#	MDXT DESCRIPTION	QTY.	PART #	#	MDXT-3 DESCRIPTION	QTY.	PART #
N	Motor, 1750 RPM, 115 V, 60 Hz	1	0135-0109-1000	P	Motor, 3450 RPM, 115 V, 50/60 Hz	1	0135-0036-1000
O	Motor, 1750 RPM, 230 V, 50/60 Hz	1	0135-0112-1000	Q	Motor, 3450 RPM, 230 V, 50/60 Hz	1	0135-0037-1000

NOTE: Contact Factory for other materials and/or parts not listed.

0135-0178-1000 R5