

GRATING SIZES	
Part Number (White)	Description
PA-R**-WT	Grate Parallel ***
Note: ** represents width in inches (available 6" to 18" in increments of 1")	

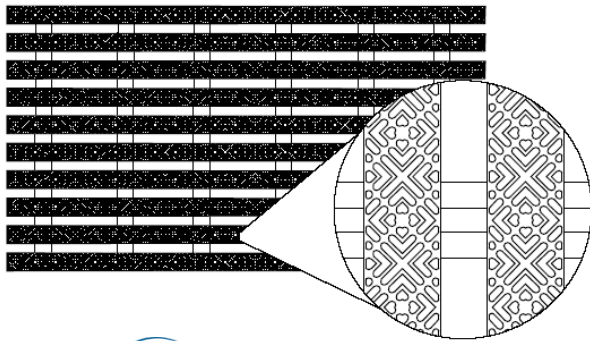
All drawing dimensions supplied by Neptune-Benson, are for reference only. All cad files were created using AutoCAD file format (*.dwg) and are presented as a service to our customers. Errors sometimes occur during this process and with software incompatibility upon opening a file. Neptune-Benson, and/or any authorized distributor of our products will not be held responsible for problems arising from files which have been converted and does not warranty the documents against deficiencies or typographical errors of any kind. We recommend that all measurements are verified with actual physical product before any custom fabrication in the field occurs.

R 06/20/19

QuietFlow® Grates

Designed to capture and disperse water surge in a matter of inches and speed flow rate.

To meet the requirements of indoor and outdoor commercial pools, competition pools and the most distinctive pool designs in the aquatics industry, Neptune-Benson has designed a high tech, high performance system of parallel grating, either straight or radius, that follows the contours of any rim-flow pool design. Our Quiet-Flow parallel grating is designed to capture water surge in a matter of inches, and speed flow and disperse rate. The result is a significantly quieter, faster pool without the excessive cost of building sloped or wider gutters.



FEATURES

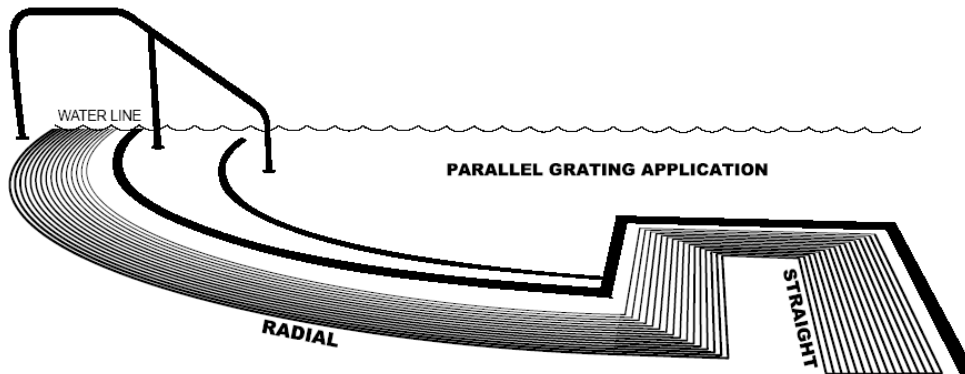
- Unique ergonomically-designed diamond ridge pattern to deflect standing water two ways, ensuring that decks are safer.
- Wet or Dry – with rigid, non-slip comfort under foot.
- QuietFlow grate complies with federal ADA regulations.
- Available in 3 standard colors – White, Gray, and Bone.
- Ten year warranty.

SPECIFICATIONS

Size	6” to 18” widths in 1” increments
Material	PVC
Surface	Non-Skid surface
Grate	White, Gray, and Bone
Open Area	37.5%
Rating	ASTM G-154 750 Hours UV ASTM C-1028 static coefficient of friction, wet and dry ASTM E-661092 load to failure and deflection @200#



SuperGrip™ Grates



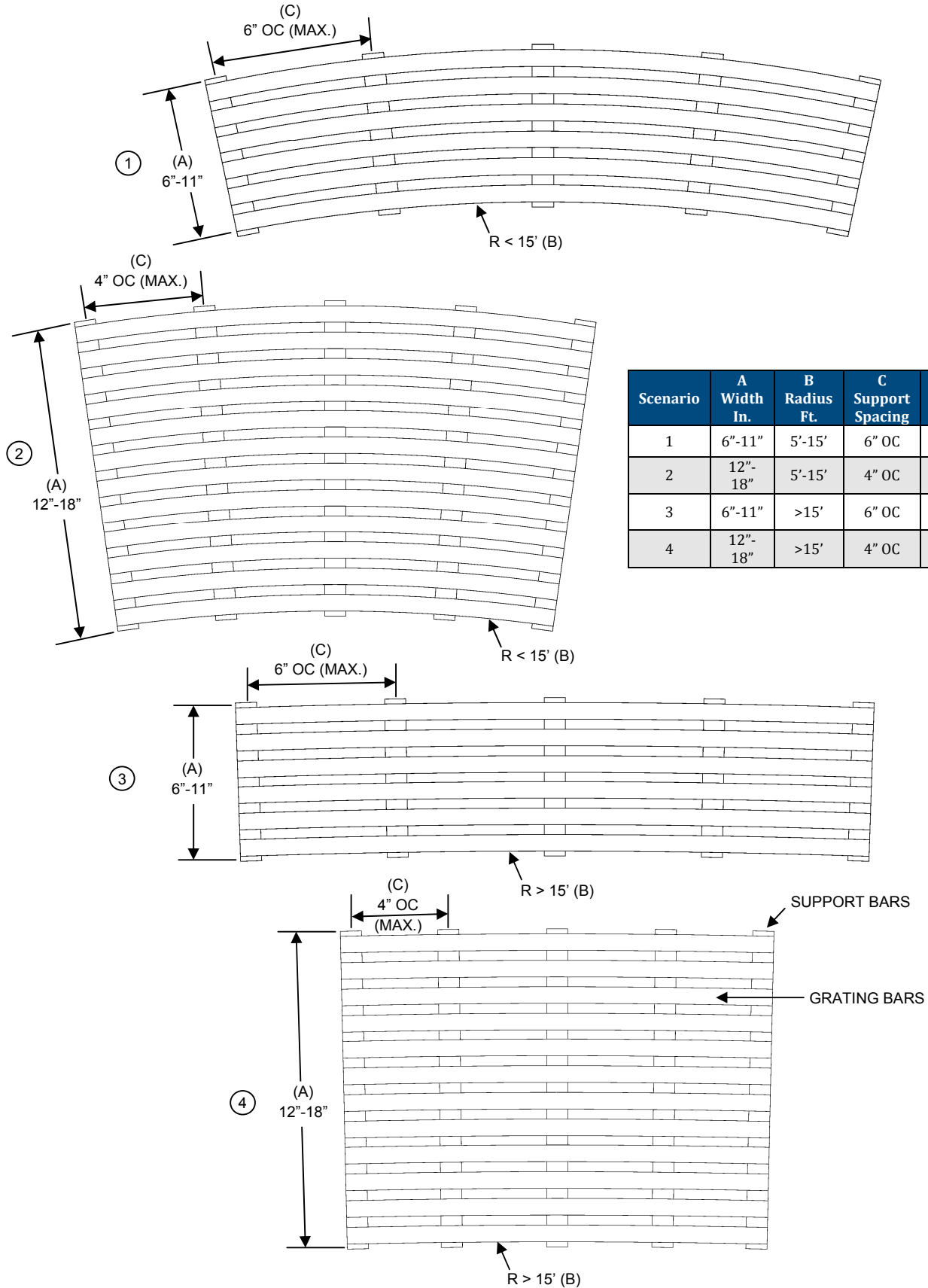
STRAIGHT

Sections of UV stabilized PVC grating in on foot lengths x widths of 6” to 18” in one inch increments. Individual pieces snap together to accommodate the length of the straight sections. The top surface of both types of parallel grating shall have a raised diamond ridge design to create good friction, wet or dry, ensuring that decks are safer with rigid, non-slip comfort underfoot.

Leading commercial/competition pool designers, aquatics consultants and contractors require that equal consideration be given to each and every element used to create and deliver spectacular, highly functional pool facility.

RADIUS

Sections of UV stabilized PVC grating in 24” long pieces connected end to end to accommodate the length of the radius sections. The width is in multiples of one inch, from 6” to 18” wide. For sizes 6-10” there shall be cross supports spaced at 6” (max) intervals around the perimeter to span the gutter opening, and to accept the parallel bars. Place supports at 4” OC for sizes 11-18”. The cross supports are designed to maintain the space between the pieces not to exceed 0.375”. The parallel radius bars are designed to attach directly into the straight sections for a clean transition. Field bend radii 12 feet and greater. Radii between 12’-5’ must be factory bent and field installed. Not recommended for radii smaller than 5’.



Scenario	A Width In.	B Radius Ft.	C Support Spacing	Factory Bend	Field Bend
1	6'-11"	5'-15'	6" OC	YES	NO
2	12'-18"	5'-15'	4" OC	YES	NO
3	6'-11"	>15'	6" OC	ON REQUEST	YES
4	12'-18"	>15'	4" OC	ON REQUEST	YES