



eVOQUA
WATER TECHNOLOGIES

VANTAGE® M41 GENERAL PURPOSE (GP) SERIES REVERSE OSMOSIS UNITS

THE CLEAR ADVANTAGE IN MEMBRANE SYSTEMS

Vantage® Reverse Osmosis (RO) units are pre-engineered and pre-assembled units designed for a variety of industrial and commercial applications. Vantage RO units offer you the greatest flexibility possible from a standard unit. Product lines within the Vantage single-pass RO family include the MicRO-Flex, M21, M41RS, M43, M83, M84 and M86; each designed for a specific range of flow rates.

Each M41 GP series RO unit consists of a vertical centrifugal high pressure feed pump, fiberglass reinforcement plastic (FRP) pressure vessels, spiral wound thin-film composite (TFC) membranes, PVC/PEX low pressure feed, reject, recycle and product piping, stainless steel high pressure piping/rubber hose and a microprocessor controller.

Vantage M41 GP Unit Benefits

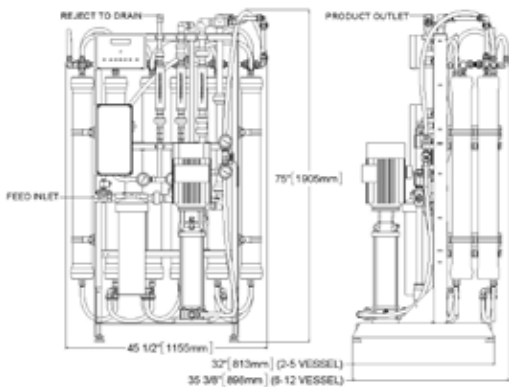
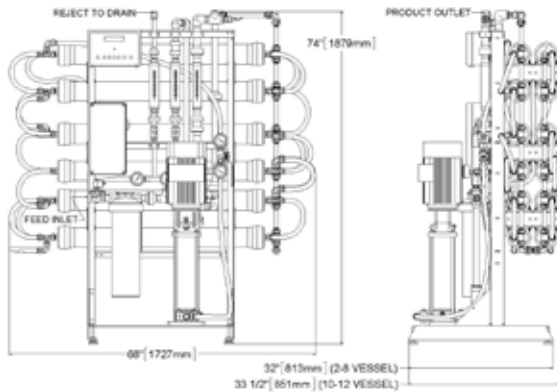
- Low energy TFC membranes ensure optimum water quality
- Microprocessor-based controller provides user-friendly programmable controls
- Auxiliary equipment interface provides system-wide control
- Reject recycle maximizes water recovery and minimizes waste
- Compact footprint saves valuable floor space
- Configurable in horizontal or vertical RO housing orientation to either maximize membrane serviceability or minimize footprint
- Easily expandable between 2 to 12 membrane units to provide increased flow demand to meet customer requirements and future needs (see equipment specifications for available expansion options)



M41GP 12 MEMBRANE VERTICAL UNIT

MODEL NO	Flow Rate Specifications GPM Nominal (m ³ /hr)								Vessel Staging	Membrane Quantity	Customer Connection Specifications			Approximate Shipping Weight			
	Product		Feed		Reject		Reject/Recycle				Feed	(FNPT) Product	Reject	Horizontal Orientation		Vertical Orientation	
	gpm	m ³ /hr	gpm	m ³ /hr	gpm	m ³ /hr	gpm	m ³ /hr						lb	kg	lb	kg
M41RGP002	2.8	0.6	3.7	0.8	0.9	0.2	4.5	1.0	1:1	2	1"	3/4"	1/2"	360	163	360	163
M41RGP003	4	0.9	5.3	1.2	1.3	0.3	3.5	0.8	1:1:1	3	1"	3/4"	1/2"	392	178	392	178
M41RGP004	5.2	1.2	6.9	1.6	1.7	0.4	2.75	0.6	1:1:1:1	4	1"	3/4"	1/2"	423	192	423	192
M41RGP005	6.3	1.4	8.4	1.9	2.1	0.5	2	0.5	1:1:1:1:1	5	1"	3/4"	1/2"	455	206	455	206
M41RGP006	7.5	1.7	10.0	2.3	2.5	0.6	3	0.7	1:1:1:1:1:1	6	1"	3/4"	1/2"	490	222	541	245
M41RGP008	10	2.3	13.3	3.0	3.3	0.7	6	1.4	2:2:1:1:1:1	8	1"	1"	1/2"	658	298	608	276
M41RGP010	12.5	2.8	16.7	3.8	4.2	1.0	8	1.8	3:2:2:1:1:1	10	1"	1"	1/2"	688	312	688	312
M41RGP012	15	3.4	20.0	4.5	5	1.1	8	1.8	3:3:2:2:1:1	12	1"	1"	1/2"	759	344	768	348

DIMENSIONS



NOMINAL DESIGN PARAMETERS

Configuration	Multi-Stage, Single Pass
Feed Water Source	Well or Softened
Prefiltration Requirements	5 μ nominal (included)
Feed Water Fouling Index	Silt Density Index (SDI) < 3
Feed Water Temperature	77°F (25°C)*
Inlet Pressure Requirement	25 - 50 PSIG (172 - 345 KPA)
Product Pressure Available	15 PSIG (103 KPA)
System Recover (Nominal)	75%
Performance Basis	A specific computer projection must be run for each individual application.

* Lower temperature may require larger booster pump.

If any of the feed water parameters are not within the limits given, contact Evoqua Water Technologies Technical Support.



210 Sixth Avenue, Suite 3300, Pittsburgh, PA 15222

+1 (866) 926-8420 (toll-free) +1 <978> 614-7111 (toll)

www.evoqua.com/water

Vantage is a trademark of Evoqua, its subsidiaries or affiliates, in some countries.

All information presented herein is believed reliable and in accordance with accepted engineering practices. Evoqua makes no warranties as to the completeness of this information. Users are responsible for evaluating individual product suitability for specific applications. Evoqua assumes no liability whatsoever for any special, indirect or consequential damages arising from the sale, resale or misuse of its products.

© 2017 Evoqua Water Technologies LLC Subject to change without notice PWS-M41GP-DS-0717